



**Intronics  
Power®**

# DC 900 SERIES

7.5 WATT SINGLE OUTPUT  
DC-DC CONVERTERS

## FEATURES

- 2:1 Input Range for Battery and Telecommunication Applications
- High Efficiency
- Low Profile Case
- Fully Regulated and Isolated
- Overvoltage Protection
- Continuous Short Circuit Protection
- Six-sided Shielding

## INPUT SPECIFICATIONS

Input Voltage: 12, 24, 48V  
Input Range: 2:1  
Input Filter: LC

## OUTPUT SPECIFICATIONS

Output Voltage: 5,12,15  
Voltage Accuracy:  $\pm 1\%$   
Line Regulation: 0.5%  
(Full Load)  
Load Regulation: 1.0%  
(Full Load to 1/4 Full Load)  
Transient Recovery: 200  $\mu$ s to 1% Final Value  
(Full Load to 1/2 Full Load)  
Temperature Coefficient:  $\pm .02\%/^{\circ}\text{C}$   
Ripple and Noise: 1% pp  
(20 MHz Bandwidth) See Note (1)  
Short Circuit Protection: Foldback  
Overvoltage Protection: Clamp

## GENERAL SPECIFICATIONS

Efficiency: 75% to 86%  
Isolation Voltage: 500 Vdc  
Operating Temperature:  $-25^{\circ}\text{C}$  to  $71^{\circ}\text{C}$   
Storage Temperature:  $-40^{\circ}\text{C}$  to  $105^{\circ}\text{C}$   
Case Type: Six-sided Continuous Metal Case  
With Non-Conductive Base  
Size: 2" x 1" x .4"

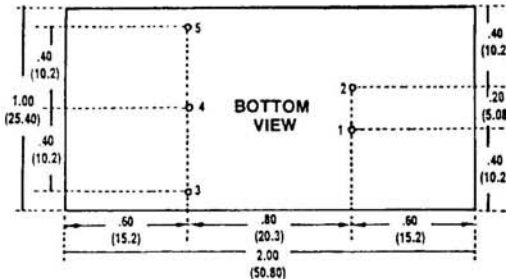
Note (1): With a 10 $\mu$ f tantalum capacitor across output.



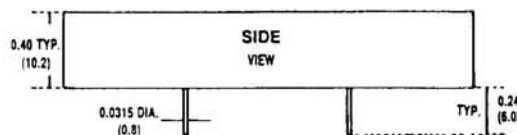
MODEL NUMBER	INPUT VOLTAGE	OUTPUT VOLTAGE	OUTPUT CURRENT
DC-911	9.5-18V	5V	1500mA
DC-912	9.5-18V	12V	625mA
DC-913	9.5-18V	15V	500mA
DC-921	18-36V	5V	1500mA
DC-922	18-36V	12V	625mA
DC-923	18-36V	15V	500mA
DC-931	36-72V	5V	1500mA
DC-932	36-72V	12V	625mA
DC-933	36-72V	15V	500mA

SINGLE

### DIMENSIONS:



### PIN CONNECTIONS:



PIN	SINGLE OUTPUT
1	+ INPUT
2	- INPUT
3	+ OUTPUT
4	NC
5	- OUTPUT